

Installation Instructions

Prefab Loop Kit 78-8016-9901-4

This kit contains a prefabricated PVC-enclosed wire loop required for operation of the 3M Magnetic Loop Detector System.

LOCATION AND ORIENTATION OF THE PREFAB LOOP

Locate the loop so that it will be centered beneath a car that has stopped to place an order. This does not necessarily mean in front of the menu sign! Be aware that a "sound post" may be used some distance from the menu sign.

As shown in figure 2, orient the loop with its "lead-in wire end" facing the curb, one to three feet away from the curb.

Although the loop's lead-in cable is suitable for direct burial, it is recommended that it be run in PVC conduit extending back inside the sound post or menu sign. Be sure to seal the open end of the conduit with a water-proof sealer such as RTV sealant.

INSTALLATION IN ASPHALT

When installed in an asphalt drive, the loop and its lead-in cable must be covered with 1 to 1½ inches of sand - to prevent melting or crushing of the PVC covering.

INSTALLATION IN CONCRETE

As shown in figure 3, when installed in a concrete drive, the loop must be supported above the road base to place the installed loop two inches or less from the finished surface of the pavement. Support the loop with stiff wire (such as coat hangers) or wooden stakes (with wire fastenings) driven into the road base.

This support and fastening system is necessary to prevent the loop from "floating" when concrete is poured.

As shown in figure 2, note that steel reinforcing rod or wire **MUST NOT** be installed either over or under the loop. In addition, rod and wire must be cut out around the loop, a minimum of six inches from all sides.

After installation of the loop, connect the 3M Magnetic Loop Detector as outlined in its installation instructions.

Questions? Call 3M Sound Products Technical Service - (612) 733-4912/4913

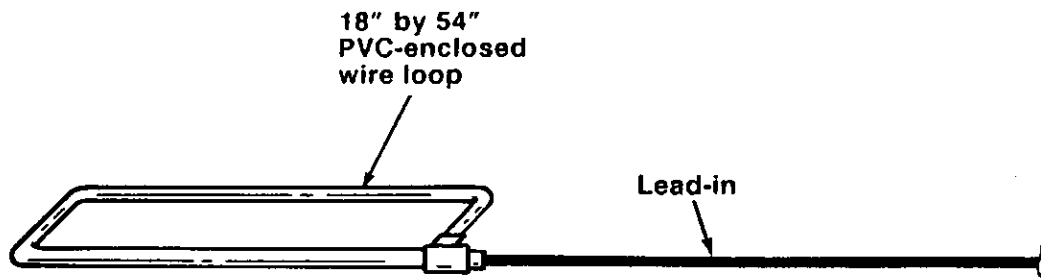


Figure 1 - Assembly View

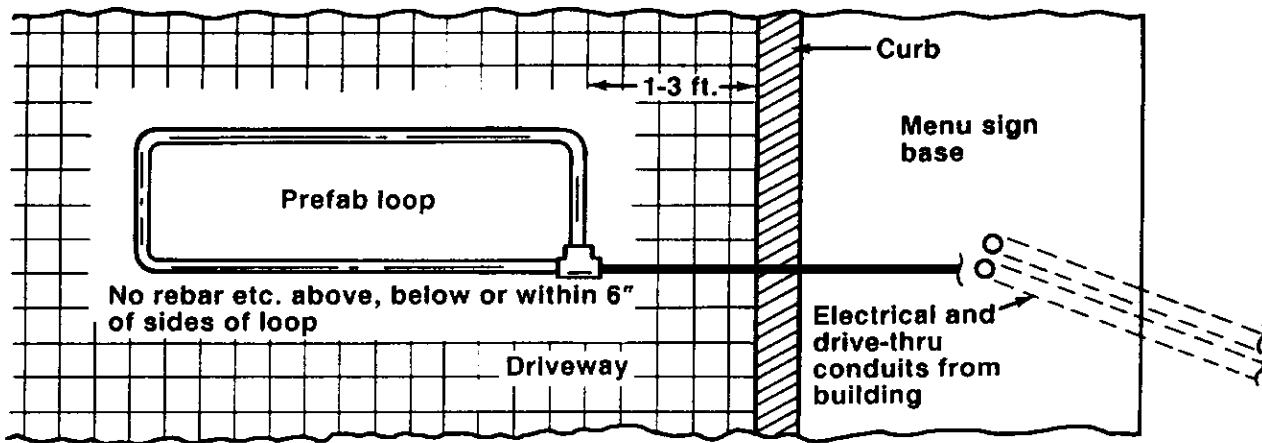


Figure 2 - Overhead View of Loop Installation

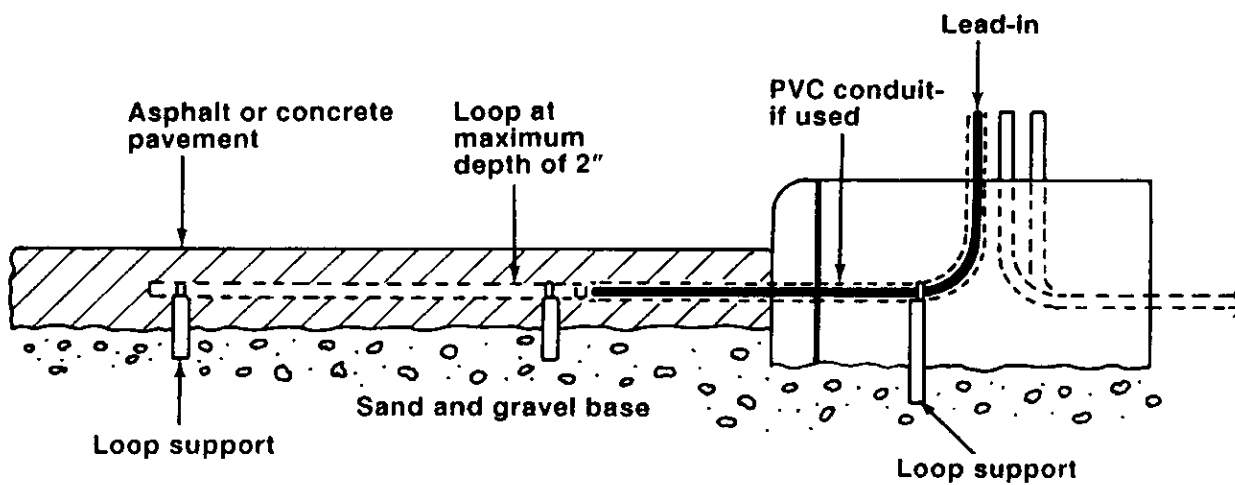


Figure 3 - Side View of Loop Installation